

Clackamas Community College

College Council

SSCC Update

December 2018



Education That Works



Architect Selection

Stakeholder Workshop

Meeting #1

Jennifer Anderson	ACAD Foundations/Connections – Assoc. Dean Enroll & Student Serv
Dustin Bare	SASS - Director of Student & Academic Support
Sarah Steidl	SASS - Graduation Services Evaluator
Greg Anderson	Financial Aid and Scholarships - Financial Aid Specialist
Starr Muramaru	Financial Aid and Scholarships - Financial Aid Specialist
Cynthia Boettcher	Student Life & Leadership
Tami Harper	AFAC Foundations/Connections - PTF Education/Paraeducator
Tara Sprehe	AFAC Foundations/Connections - Dean AFAC
RB Green	Student Academic Support Services
Ray Atkinson	ACAD Foundations/Connections - Transportation Systems Analyst
Michelle Baker	Student Activities- Student Life and Leadership Co
Ariane Mabano	Student Government
Lindsay Curletto	Enrollment Services - Admissions Counselor
Ariane Rakich	Enrollment Services - Admissions Counselor
Ric Jenkerson	Testing - Lead Testing & Info Specialist
Travis Swanson	Enrollment Services - Enrollment Services Specialist
Katie Harvey	Office of Education Partnerships - Academic & Career Coach
A.J. Smith	Skills Development - Department Chair
Darlene Gieger	Instruction & Student Services
Suzanne Munro	English As A Second Language - Department Chair
Mindy Kobata	A/R Business Office
Felicia Arce	Disability Resource Center
Casey Curry	Student/Academic/Support Services - Veteran Outreach and Retention
Sunny Olsen	Community Education - Dir. Comm. Ed & Harmony Campus
Steve Cameron	Business Office (Accounts Receivable)
Molly McCulloch	Financial Aid and Scholarships
Stephanie Sampedro	Financial Aid and Scholarships - Financial Aid Specialist

Stakeholder Workshop

Meeting #1

Klaudia Cuevas	Financial Aid and Scholarships - Financial Aid/Scholarship Coordination
Sara Alexander	Financial Aid and Scholarships - Financial Aid Specialist
Kandie Starr	Advising/Career Services - Academic & Career Coach
Lupe Martinez	Counseling - Department Chair
Bob Cochran	Campus Services - Dean
Esther Sexton	Counseling - Counselor
Stephanie Schaeter	Counseling - Counselor
Kyle Thomas	Student Academic Support Services
Robin Dryden	Student Academic Support Services
Casey Sims	Counseling - Counselor
Will Burkhalter	Enrollment Services - Enrollment Services Specialist
Kai Gambie	Bookstore - Bookstore Coord-Merch lead
Tom Sonoff	College Safety - Director
Melissa Padron	Enrollment Services - Enrollment Services Specialist
Mariz Dixon	Enrollment Services - Enrollment Services Specialist
Lindsey Pierce	Enrollment Services - Enrollment Services Coordinator
Chris Sweet	Enrollment Services - Registrar/Enrollment Services Operating Manager
Karen Ash	Financial Aid and Scholarships - Director
Patti Miles	Inici Group - Project Manager

Stakeholder Workshop Meeting #1



Stakeholder Workshop Meeting #1

Guiding Principles

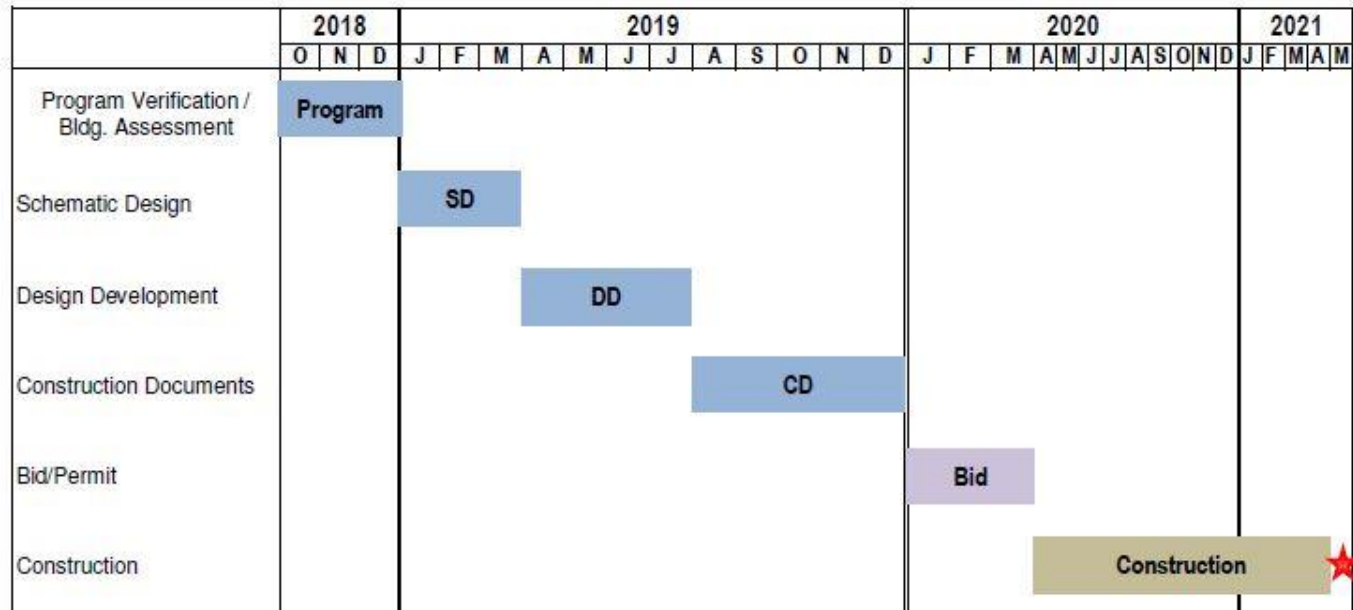
High quality education and training opportunities that are accessible to all students, adaptable to changing needs, and accountable to the community.

Create high quality, relevant, innovative and evidence-based academic programs and environments.

“One-stop” student services model that is technology rich and empowering to students.

Stakeholder Workshop Meeting #1

Schedule



Stakeholder Workshop Meeting #1



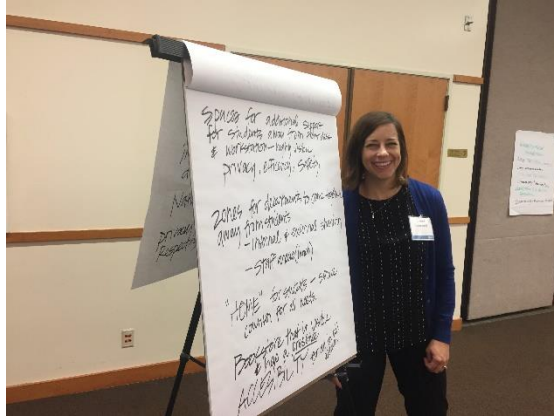
Stakeholder Workshop Meeting #1



Stakeholder Workshop Meeting #1



Stakeholder Workshop Meeting #1



Stakeholder Workshop

Meeting #1

• Program Guiding Principals

Table 1:

- High Sustainability
- Can hold events without being too disruptive
- Versatile Work Areas
- Fewer counters, more tables (we sit together as equals)
- Access to tables
- Equity in spaces (i.e, bigger Multicultural Center)
- Structured to serve our large Part time/Evening student population
- Lots of covered outdoor spaces (this is Oregon after all)
- Protect private office space for confidentiality (and build in good soundproofing)
- Promote ways to bring and prepare your own food for lunch/dinner
- Improved signage

Table 4:

- Intuitive Pathways through the process
- Welcoming open landscape
- Cougar sculpture!
- Collaborative, shared workspace for departments that work closely together
- Inside/outside connection
- Love the natural campus
- Large, welcoming windows
- Safe place through visibility
- Centered entry "start here" area
- Clear from 213 entry destination
- Curves or angles that shape the space

Table 3:

- Security?
- Abundant natural light!
- Open unobstructed entrances with a welcoming character
- Balance between open spaces and private spaces
- Reflective/ Prayer spaces
- Balance of art/décor from different cultures
- Must be an obvious starting place/landmark
- Flexible meeting spaces for students and staff
- We need a break room

Table 5:

- Visibility
- Welcoming
- Openness
- Inclusive
- Community Orientation
- Landmark/beacon/front porch(s)
- Clear wayfinding (maps)
- Living room/place to hang out
- Making connections
- Food experience/environments
- Sense of identity- flags
- Branding- cougar colors
- Site Observations

Stakeholder Workshop Meeting #2

- Stakeholder groups attended a one hour meeting to discuss roles/responsibilities and adjacency needs for their work.

User Groups

User Groups	Function Areas	Lead(s)
Retention and Completion	<ul style="list-style-type: none"> • Advising • Career Services • Graduation Services • Office of Educational Partnerships 	Dustin Bare Jaime Clarke
Access and Recruitment	<ul style="list-style-type: none"> • Financial Aid • Registration and Records • Student Accounts/Bursar • Testing and Placement Services • Welcome Center (admissions) 	Karen Ash Chris Sweet
Support Services	<ul style="list-style-type: none"> • Community based organizations • Counseling • Disability Resource Center • Veterans Center 	Darlene Geiger Lupe Martinez
Student Life/ Student Union	<ul style="list-style-type: none"> • ASG • Bookstore • Cafeteria • Cougar Cave • Multicultural Center 	John Ginsburg Carol DeSau/ Kai Gambee

00 x 40.00 in

Guiding Principles

Foster Flexibility, Accessibility, and Accountability

Demonstrate inclusive, equitable, and universally accessible design that reflects the multigenerational and diverse student body and surrounding community.

Empower Students Through Technology

Implement a student-centered, 'one place' student services model to empower students with a technology-rich environment that balances high-tech with high-touch.

Create a Campus Gateway

Design a welcoming academic introduction and resource for all.

Promote Cross-Department Collaboration

Enhance cross-department connectivity, collaboration and innovation to enhance the student services experience.

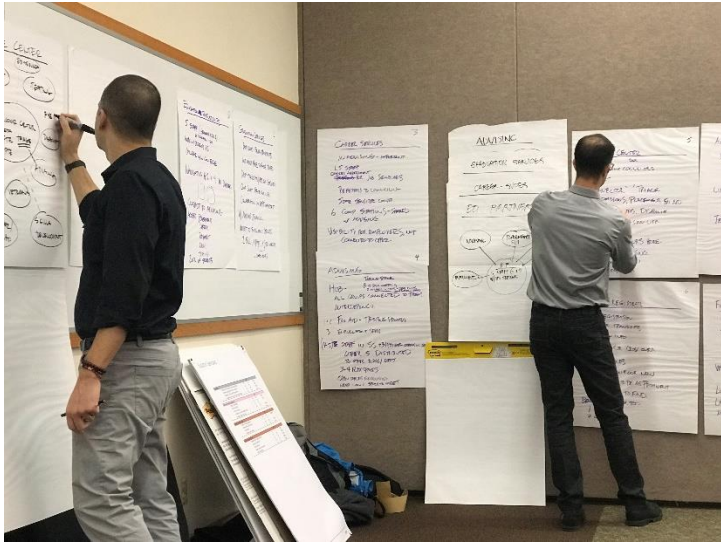
Advance Commitment to Sustainability

Continue a commitment to sustainability through thoughtful, innovative and demonstrative design strategies.

Support Academic Success

Expand access to high quality, relevant, innovative and evidence-based environments that set the stage for and continue support of student academic success.

Included financial boundaries





Stakeholder Workshop Meeting #3

- Review and consolidate programming discussions and findings.

Thank you!